



GLASS FRONTED NICHEs



BRONZE INTERNATIONAL

Imagine Create Deliver

Glass Fronted Niches	3
Glass Fronted Niches - tThe details	4
Suggested Installation Opportunities	6
Modular Niche Configurations	7
Wall Features and Special Areas	8
Three Levels of Memorialization	10
Memorialization Prodvcts	12
Features	Inside Back Cover

WHO WE ARE

With a reputation and brand built on innovative solutions, attention to detail and quality of products **LP Bronze International** has set a new benchmark for memorialization solutions.

LP Bronze International focuses on its customers' needs and develops creative "end-to-end" solutions. Its solutions are backed by strong engineering, care and commitment. In an industry that functions within a business environment that has significant operating costs, LP delivers extraordinary results financially in combination with aesthetically pleasing and meaningful memorialization solutions.

LP Bronze International's ultimate goal is to build long-term relationships with its customers. This will be achieved by helping customers meet the needs of their client families' in terms of culture, tradition and their desire to personalize.

IMAGINE...

- Increased sales.
- Increased revenue.
- Lower operating costs.

CREATE...

- Create uniqueness for your property.
- Differentiate yourself from your competition.
- Offer a range of standard or customized designs that address your families' needs.

DELIVER...

- Engaging and aesthetically pleasing mausoleum solutions that provide beauty and solace for the community.
- A professional marketing message to your families.



Glass Fronted Niches

With cremation rates rising every year, Glass Fronted Niches is an option you cannot afford to ignore. In addition, we have the widest selection of value added options available that support your families' culture, tradition and faith.

These beautifully designed Glass Fronted Niches will "Wow" your families' and greatly enhance your revenues.

The "modular cell" approach utilizes principles adopted from nature and modern engineering. These principles are those that the honey bee uses to build its honey comb and aircraft designer's apply to fabricate wings. Thereby drastically improving longevity as it avoids sagging. The end result being the strongest and most durable in the marketplace.

In addition, after prudent market research, we have chosen to offer a clean and contemporary look together with the low voltage "hidden lighting" and the sparkle of our beveled glass makes for an attractive product.

IMAGINE

- Can you imagine, that the wall in front of you could be inlaid with Glass Fronted Niches and you could suddenly generate significant new revenue and host many new families?
- Can you imagine, turning an empty space, storage room, closet or wasted corner into a beautiful and serene family Glass Fronted Niche Alcove?
- Can you imagine professional sales people presenting a new world of revenue opportunity for you?

CREATE . . .

- Beautiful memorialization areas from unused spaces.
- A new revenue opportunity you never thought possible.
- New product choices.

DELIVER . . .

- Contemporary solutions to the growing need to accommodate cremations.
- Dignified and beautiful memorialization for families choosing cremation.
- Exemplary customer satisfaction that will "Drive Your Sales".



A Premium Quality Product

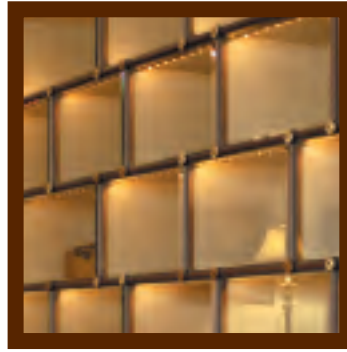
Each niche is an independent stainless steel compartment. The units are double-coated steel with a zinc satin first coat, and then a powder coated color seal. This double coating process provides industry leading protection against tarnishing and blemishes, even if the unit is nicked or scratched.

Modular Niches

A classic approach to design, with solid bronze rosettes and unique extrusion, is available with standard niche sizes of 12 inches x 12 inches and up, in six inch increments For example: 12 inches x 18 inches; 12 inches x 24 inches and a spectacular 24 inches x 24 inches feature niche. These configurations allow for a combination of single, intermediate, double, and family size niches.

Variety of Shutter Fronts

Standard shutter fronts come in glass which can be flat, beveled, or tinted. Glass Fronted Niche shutter fronts offer flexibility and the fronts can be customize for bronze, marble and granite.



Elegant, Diffused Lighting

The Interior lighting is indirect "hidden" lighting with a low voltage, 24 volts with the bulb life of 2500 hours and a 110 watt electrical feed. Each niche is felt gasketed to prevent entry of dust/insects etc.



Bronze Rosettes

The bronze rosettes that adorn each corner and matching extrusion are designed and manufactured with the highest quality materials and casting techniques.

Additional Furnishings

Easily accommodates granite or marble kick plates, wood side panels and leg levelers.



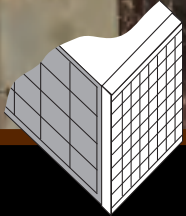
Value Added Options - Memorialization Products

Vases, lamps and emblems provide a fitting tribute to celebrate and honor memories while supporting your client families culture, tradition and desire to celebrate the individuality of the deceased.

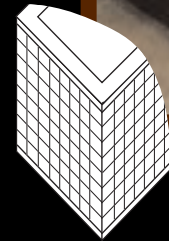
We offer some of the finest collections that are exclusive and timeless. Bronze bud vases, interior lighting and external lights with the innovative Lexlight, the true electronic candle with a ten-year replacement warranty.



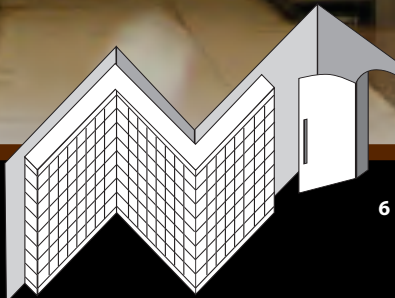
SUGGESTED INSTALLATION OPPORTUNITIES



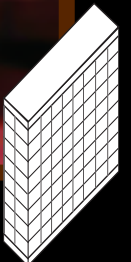
Manitoba, Canada



Ontario, Canada



California, USA

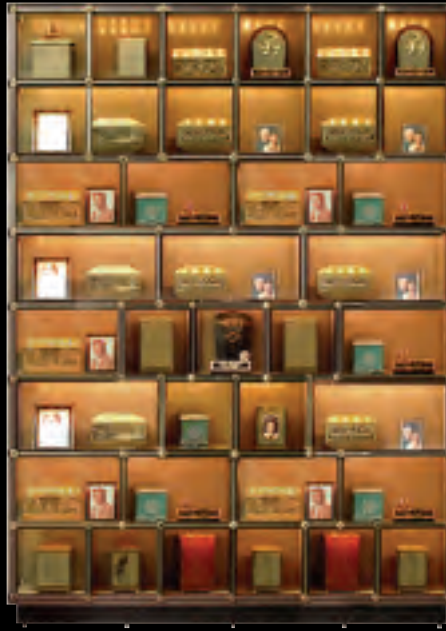


Illinois, USA

EXAMPLES OF STANDARD NICHE CONFIGURATIONS



6' X 8' unit - 48 single niches



6' X 8' unit - 23 single niches
10 intermediate niches
5 family niches



6' X 8' unit - 18 single niches
12 intermediate niches
6 family niches



6' X 8' unit - 30 single niches
7 family niches
1 feature niche



6' X 8' unit - 34 single niches
4 intermediate niches
2 family niches
1 feature niche



6' X 8' unit - 24 single niches
8 intermediate niches
4 family niches
1 feature niche

WALL FEATURES AND SPECIAL AREAS



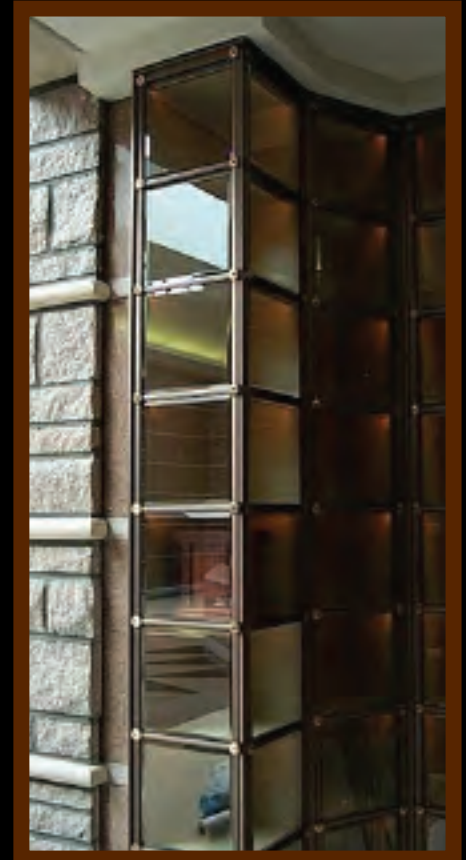
New York, USA



West Virginia, USA



California, USA



Ohio, USA



Ohio, USA



New Jersey, USA



Michigan, USA



Ohio, USA

THREE LEVELS OF MEMORIALIZATION (SINGLE)



VALUE SINGLE (Level 1)

- 12 x 12 inch niche with interior lighting and capacity for two urns
- One bronze urn (45537)
- One bronze scroll for engraving (38713)
- One easel to accommodate scroll placement (FR5000)
- One bronze exterior flower vase (VB001007)
- One bronze exterior vigil light (LB0008E007)



STANDARD SINGLE (Level 2)

- 12 x 12 inch niche with interior lighting and capacity for two urns
- One bronze urn (45537)
- One bronze scroll for engraving (38713)
- One 6cm x 8cm photoceramic (4948C02)
- Two easels to accommodate scroll and photoceramic placement (FR5000)
- One bronze exterior flower vase (VB001007)
- One bronze exterior vigil light (LB0008E007)



PREMIUM SINGLE (Level 3)

- 12 x 12 inch niche with interior lighting and capacity for two urns
- One bronze urn (45537)
- One bronze scroll for engraving (38713)
- One 8cm x 10 cm photoceramic (4948C02)
- Two easels to accommodate scroll and photoceramic placement (FR5000)
- One bronze exterior flower vase (VB001007)
- One bronze exterior vigil light (LB0008E007)

THREE LEVELS OF MEMORIALIZATION (COMPANION)



VALUE COMPANION (Level 1)

- 12 x 12 inch niche with interior lighting and capacity for two urns
- Two bronze urns (45537)
- Two bronze scrolls for engraving (38713)
- Two easels to accommodate scroll placement (FR5000)
- One bronze exterior flower vase (VB001007)
- One bronze exterior vigil light (LB0008E007)



STANDARD COMPANION (Level 2)

- 12 x 12 inch niche with interior lighting and capacity for two urns
- Two bronze urns (45537)
- Two bronze scrolls for engraving (38713)
- One 8cm x 10 cm photoceramic (4948C02)
- Two easels to accommodate scroll and photoceramic placement (FR5000)
- One bronze exterior flower vase (VB001007)
- One bronze exterior vigil light (LB0008E007)



PREMIUM COMPANION (Level 3)

- 12 x 12 inch niche with interior lighting and capacity for two urns
- Two bronze urns (45537)
- Two bronze scrolls for engraving (38713)
- Two 6cm x 8cm photoceramics (4948C02)
- Three easels to accommodate scroll and photoceramic placement (FR5000)
- One bronze exterior flower vase (VB001007)
- One bronze exterior vigil light (LB0008E007)

MAEMORIALIZATION PRODUCTS



**Montreal Lex lights
with cross**

LB0002CE006 4.0"



Montreal Lex lights

LB0001E006 4.0"



Simplicity LexLight

LB0008E007 3.0"



Vases with cross

VB0042 3.0"

VB0043 4.25"



Roman vase

VB0027 3.0"

VB0026 4.0"



Bud Vase

VB0044 4.75"



Simplicity Vase

VB00010007 3.0"



Feature Niche

*Feature or display niches create a focal point for the unit
and the base of the statue can be used as an urn.*

For further product information

or

to order products you can

reach us at:

LP Bronze International

100 Sunrise Ave., Unit 101/152

Toronto, ON M4A 1B3

online:

www.lpbronze.com

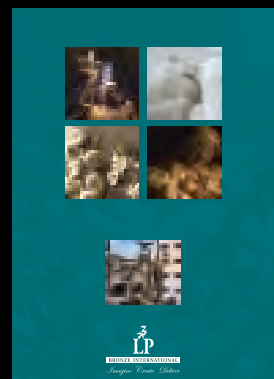
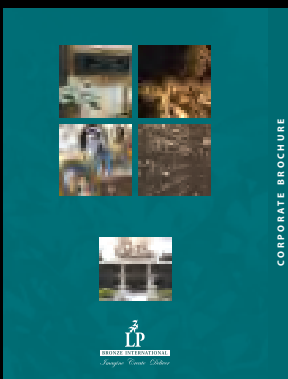
info@lpbronze.com

toll free at:

1.888.572.2645

fax:

1.877.572.2645



BRONZE INTERNATIONAL

Imagine Create Deliver